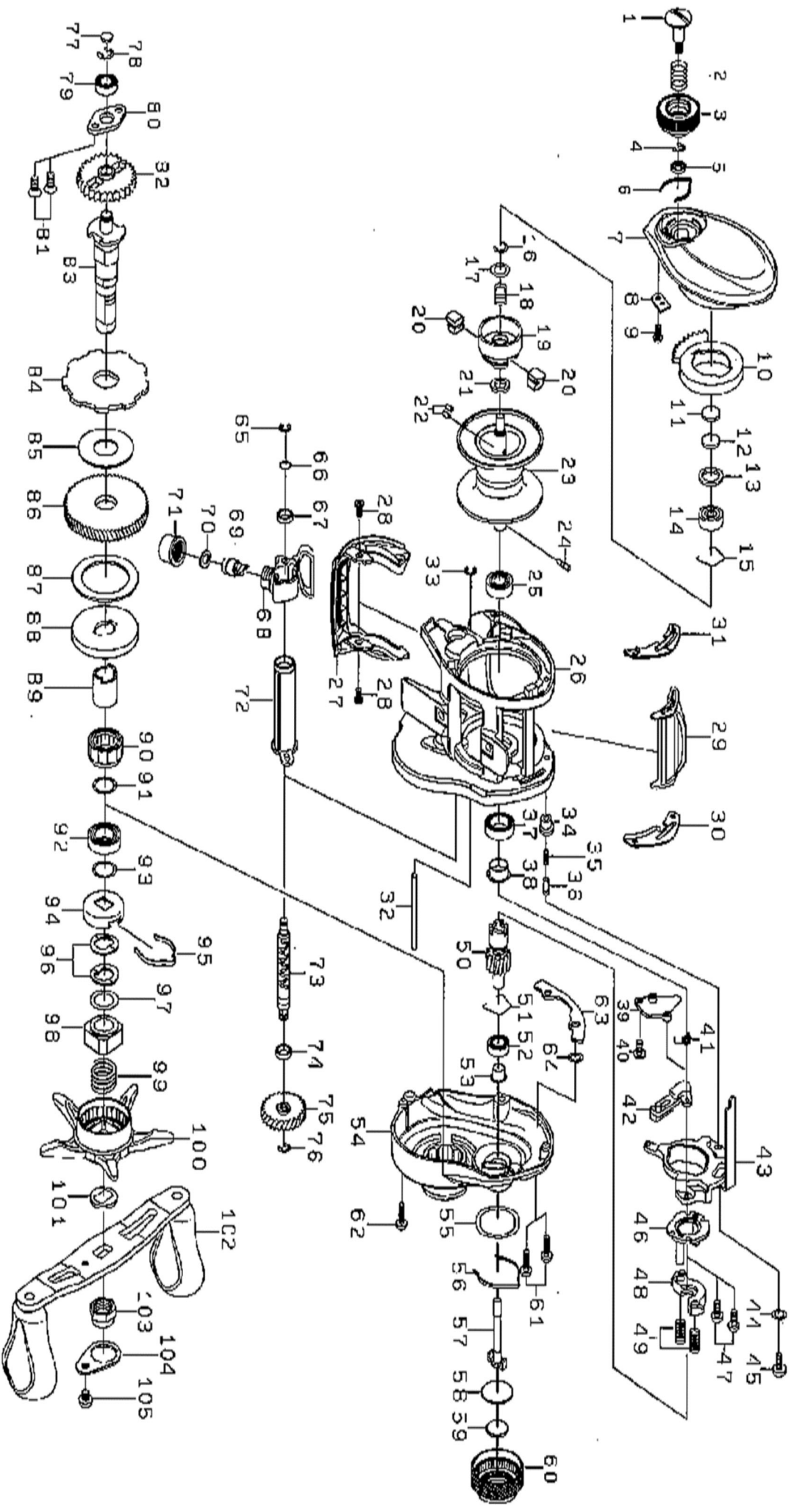




Please quote by part number, not key number when ordering
spares@daiwaaustralia.com.au PH: 02 8644 8644

ZILLION TWS 100HS





Please quote by part number, not key number when ordering
spares@daiwaaustralia.com.au PH: 02 8644 8644

ZILLION TWS 100HS

Key No.	Part Number	Description	Key No.	Part Number	Description
1	6H930401	SCREW(A)	58	6H161001	SPACER(F)
2	6E167101	SPRING(A)	59	6B175503	SPACER(G)
3	6H930219	BRAKE DIAL	60	6H281201	CAST CONTROL CAP
4	6B339801	BRAKE DIAL RETAINER(A)	61	6G040822	RIGHT SIDE PLATE SCREW(A)
5	6F637701	BRAKE DIAL WASHER	62	6G040821	RIGHT SIDE PLATE SCREW(B)
6	6H663401	BRAKE CLICK SPRING	63	6J044502	PLATE(B)
7	6J141101	LEFT SIDE PLATE	64	6H770601	"O"RING(B)
8	6H915501	BRAKE DIAL RETAINER(B)	65	63205901	RETAINER(B)
9	6G939301	SCREW(B)	66	6B411700	WASHER(B)
10	6J045701	MAGNET HOLDER	67	6G720001	WORM SHAFT SPACER (A)
11	63757400	SPACER(A)	68	6J176601	T-LEVEL WIND
12	63757411	SPACER(B)	69	61214212	LINE GUIDE PAWL
13	6G185101	SPACER(C)	70	63731300	WASHER(C)
14	6G511506	BALL BEARING(A)	71	6F402801	LINE GUIDE NUT
15	6F032201	BEARING RETAINER(A)	72	6H910801	LEVEL WIND GUARD
16-25	6Z022042	SPOOL ASSEMBLY	73	6H911702	WORM SHAFT
26	6J044603	FRAME	74	6G469005	BALL BEARING(D)
27	6J045201	FRONT PLATE	75	6H910501	WORM GEAR
28	6H455402	SCREW(C)	76	6B339801	RETAINER(C)
29	6J101601	CLUTCH LEVER	77	6G099800	WASHER(D)
30	6H915601	SPACER(D)	78	63208002	RETAINER(D)
31	6H915701	SPACER(E)	79	6B358605	BALL BEARING(E)
32	6H912101	STABILIZER BAR	80	6H928901	PLATE(C)
33	6H704101	RETAINER(A)	81	6E134509	SCREW(F)
34	6H910601	COLLAR	82	6H912701	DRIVE SHAFT GEAR
35	6H928801	SPRING(B)	83	6H911601	DRIVE SHAFT
36	6J055201	PIN	84	6H929401	CLUTCH WHEEL
37	6B861704	BALL BEARING(B)	85	6J085101	DRIVE SHAFT WASHER (A)
38	6H266601	BALL BEARING COLLAR(B)	86	6Z021819	PINION GEAR+DRIVE GEAR
39	6H912301	PLATE(A)	87	6H452601	DRIVE SHAFT WASHER (B)
40	6H294101	SCREW(D)	88	6H913201	KEY WASHER
41	6H450001	CLUTCH CAM SPRING	89	6G545001	GEAR SHAFT COLLAR
42	6H450101	CLUTCH TRIP LEVER	90	6G819801	ROLLER CLUTCH
43	6H928701	CLUTCH CAM	91	6B553801	WASHER(E)
44	6H159201	WASHER(A)	92	6B861704	BALL BEARING(F)
45	63522501	SCREW(E)	93	6B553802	WASHER(F)
46	6H659101	CLUTCH CAM PLATE	94	6F028203	CLICK LEAF SPRING HOLDER
47	6B032904	CLUTCH CAM SCREW	95	6F032401	CLICK LEAF SPRING
48	6H929001	YOKE	96	61508901	DRAG SPRING WASHER
49	6J055301	YOKE SPRING	97	6H929501	WASHER(G)
50	6Z021819	PINION GEAR+DRIVE GEAR	98	6J141001	NUT
51	6B421601	BEARING RETAINER(B)	99	6J011901	SPRING(C)
52	6B358605	BALL BEARING(C)	100	6J140001	STAR DRAG
53	6H159501	BALL BEARING COLLAR(A)	101	6F576601	HANDLE COLLAR
54	6J142701	RIGHT SIDE PLATE	102	6J142801	HANDLE ASSEMBLY
55	6H157002	"O"RING(A)	103	6G793316	HANDLE NUT
56	6H160901	CLICK LEAF SPRING(A)	104	6H834504	HANDLE PLATE
57	6H159601	PINION SHAFT	105	63538301	HANDLE SCREW